





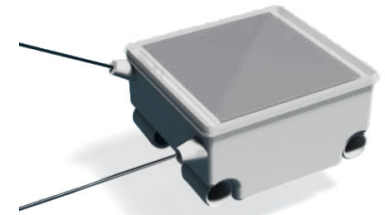
PinPoint Cell

Technology:  Satellite  GSM

Product:  Tag



Northern lapwing (*Vanellus vanellus*)



GPS-GSM tag, from only 6.6g!

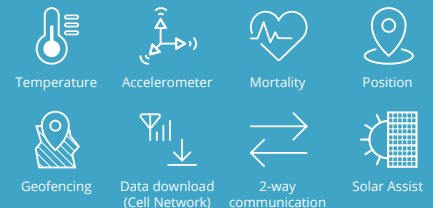
PinPoint Cell tags combine the success of our PinPoint GPS with the most popular data download method: via the mobile phone network. You can see the data online at Lotek's Webservice, or even using an app on your phone, so you can keep up to date with where your birds are flying. Not only that, but it is easy to change or update the GPS and sensor collection schedule of your deployed tags remotely.

Our lightest tags are possible because they use the energy-efficient 2G networks. Easy to schedule, easy to start and easy to check and change once deployed. Contact one of our telemetry experts to help you choose the optimal tag for your study needs.

Options

- 2G, 3G and now **5G!**
- 2-way communication of schedules
- Activity data
- Alerts or different GPS schedule when in a Virtual Fence

Features:



Lightweight:

Our 2G version is incredibly light for cell download.

Solar Assisted:

Despite its small size, it can last a long time with the help of solar energy

Abundant Metadata:

Plenty of environmental and behavioural data are provided to enhance the locations recorded

Product Applications

PinPoint GPS Cell for birds & bats. Solar tags that transmit GPS data via the cellular network. Large amounts of data for a long duration. No need to ever disturb your species again. Migratory, regional and local movements can all be monitored for species that are within cellular coverage on occasion.

Model	GSM Network	Weight ^[1] (g)	Size (LxWxH) (mm)	Solar panel (sq mm)	Cell size (mAh)	Antenna Type	Harness Tubes
PinPoint Cell Solar 2G-1-30	2G	6.6	23 x 21 x 15	275	35	External	4 ^[2]
PinPoint Cell Solar 2G-2-30	2G	8.6	48 x 21 x 12	550	35	External	3 ^[3]
PinPoint Cell Solar 2G-2-75	2G	11	48 x 21 x 12	550	75	External	3 ^[3]
PinPoint Cell Solar 3G-4-100	3G	18	61 x 26 x 21	550	100	Internal	2 ^[4]
PinPoint Cell Solar 3G-4-210	3G	20	62 x 26 x 21	550	210	Internal	2 ^[4]
PinPoint Cell Solar 5G-1-30	5G	6.6	23 x 21 x 15	275	35	External	4 ^[2]
PinPoint Cell Solar 5G-2-30	5G	8.6	23 x 21 x 15	500	35	External	3 ^[5]
PinPoint Cell Solar 5G-2-75	5G	11	49 x 21 x 12	550	75	External	3 ^[3]

1. Weight ±5% variation
2. Four 2.5 x 5mm Harness Tubes (Øx L)
3. Two 2.5 x 5mm Harness Tubes in front, One 2.5 x 10mm Harness Tube in back (Øx L)
4. Two 3 or 4.5mm Harness Tubes (Ø)
5. Two 2.5 x 5mm Harness Tubes in front, One 2.5 x 5mm Harness Tube in back (Øx L)

Features and specifications subject to change without notice.

Technical specifications:

Operating temperature: -5°C to +50°C

Waterproofing: Splash tolerant

Antenna lengths:

GPS antenna: 50mm

GSM antenna: 95mm

(GSM antenna: 96mm for PinPoint Cell Solar 5G-2-75)

Antenna options on tag weight:

More robust antenna options are available and add weight.

Please ask our Telemetry Specialists for more information.

Rechargeable: Solar powered

Data Download: Web portal

Warranty

PinPoint Cell tags are warrantied to be free of defects in materials and workmanship under Normal Use for a duration of 80% of Estimated Life to a Maximum of 6 months, whichever is shorter, of their first deployment. For Warranty terms and conditions, please review our [Warranty Statement](#).